





RIT | Instructional Modality Guide for Fall Semester

Instruction Modes

RIT is offering a mix of in-person, blended, and online course offerings this fall. They are referred to as the **instruction mode**.

In-person	Blended	Online - Synchronous	Online - Asynchronous
 <p>Instruction is delivered fully in the classroom/lab/studio with interaction between the instructor and student.</p>	 <p>Instruction is delivered both through online instruction and in-person meetings. There are two types:</p> <ul style="list-style-type: none"> ▪ <i>Blended Learning</i> has no need to split the class due to room capacity constraints ▪ <i>Blended AB</i> requires the class to be split into separate (“A/B”) groups due to room capacity constraints 	 <p>Instruction is delivered fully online with scheduled online class meetings with the instructor.</p>	 <p>Instruction is delivered fully online with no in-person or scheduled online class meetings.</p>
<p>Students enrolled in these classes must be able to access campus facilities and attend scheduled course meetings on campus in order to demonstrate achievement of the learning outcomes of the course.</p>	<p>Students enrolled in blended courses are expected to attend in person sessions as scheduled unless excused by the instructor.</p>	<p>Students enrolled attend class online and engage in some or all course activities at the specified days/times published in the class schedule.</p>	<p>Students enrolled complete all course activities without designated class meeting times. Students must consult with the instructor to understand the means by which the student will complete the course requirements.</p>
<p>The full class meeting times and locations are provided in SIS.</p>	<p>All in-person and online simultaneous meeting times are provided in SIS. Locations are provided for in-person meetings in SIS.</p>	<p>The full class meeting times are provided in SIS.</p>	<p>No meeting times are listed on the student’s schedule in SIS.</p>

Instruction Modes in SIS | What will an In-person class look like?

The example below provides details for how an in-person class will appear on SIS.

In-Person Course

Class Information				
Class Details	Meeting Information	Enrollment Information	Class Availability	Textbook/Other Materials
MLFR 202 Beginning French II Seminar - 10348-01				Status : Open
Units	Grading	Instruction Mode	Location	Campus
4.00	Standard Letter Grade	In Person	Rochester Institute of Tech	RIT Main

Course name and instruction mode.
This course will be held **in person** in classrooms on campus.

MLFR 202 Beginning French II					
Status	Units	Grading Basis	Grade	Academic Program	Requirement Designation
Enrolled	4.00	Standard Letter Grade		UGRD Non-Degree	
Class	Start/End Dates	Days and Times	Room		
	08/19/2020 - 11/24/2020	Days: Tuesday Thursday Times: 11:15AM to 12:05PM	Wallace Library (WAL) - A400		
Seminar - 10348-01	08/19/2020 - 11/24/2020	Days: Monday Wednesday Times: 11:15AM to 12:05PM	Brown Hall (BRN)-1120		

This in-person course will be held **Monday** through **Thursday**.

This in-person course will be held on campus in **Wallace Library** and **Brown Hall** on the designated days and times.

Instruction Modes in SIS | What will a Blended Learning class look like?

The example below provides details for how a blended class will appear on SIS.

Blended Learning Course

Course name and instruction mode.
This course is **blended**, a combination of **in-person** and **online instruction**.

Class Information					
Class Details		Meeting Information	Enrollment Information	Class Availability	Textbook/Other Materials
ISTE 434 DataWarehousing Lec/Lab - 12558-01				Status : Open	
Units	Grading	Instruction Mode	Location	Campus	
3.00	Standard Letter Grade	Blended Learning	Rochester Institute of Tech	RIT Main	

This blended learning class will be held **in person on Mondays** throughout the semester.
The rest of the course content will be delivered **online asynchronously**.
Students complete course activities without designated class meeting times, therefore, no other meeting times are listed on the schedule.

ISTE 434 DataWarehousing					
Status	Units	Grading Basis	Grade	Academic Program	Requirement Designation
Enrolled	3.00	Standard Letter Grade		UGRD Non-Degree	
Class	Start/End Dates	Days and Times	Room		
Lec/Lab - 12558-01	08/19/2020 - 11/24/2020	Days: Monday Times: 12:20PM to 1:10PM	Golisano Hall (GOL)-2650		

Instruction Modes in SIS | What will a Blended A/B Split class look like?

The example below provides details for how a blended A/B class will appear on SIS.

Blended A/B Split Course

Class Information				
Class Details	Meeting Information	Enrollment Information	Class Availability	Textbook/Other Materials
COMM 302 Interpersonal Communication Lecture - 10208-01				Status : Open
Units	Grading	Instruction Mode	Location	Campus
3.00	Standard Letter Grade	Blended A/B	Rochester Institute of Tech	RIT Main

Course name and instruction mode.

This course is **blended A/B split**, which indicates that the class is required to be split into separate (“A/B”) groups due to room capacity constraints.

▼ COMM 302 Interpersonal Communication					
Status	Units	Grading Basis	Grade	Academic Program	Requirement Designation
Enrolled	3.00	Standard Letter Grade		UGRD Non-Degree	
Class	Start/End Dates	Days and Times	Room		
Lecture - 10208-01	08/19/2020 - 11/24/2020	Days: To be Announced Times: To be Announced	Split component shows meetings		
	08/19/2020 - 11/24/2020	Days: Thursday Times: 2:00PM to 3:15PM	Online		
Split - 17992-01S1	08/19/2020 - 11/24/2020	Days: Tuesday Times: 2:00PM to 3:15PM	Frank E. Gannett (GAN)-4202		

This student’s section of the class will meet:

- **Online synchronously** at 2:00 pm, Thursdays
- **In-person** at 2:00 pm, Tuesdays in the Frank E. Gannett building

These meeting times will remain throughout the fall semester.

Instruction Modes in SIS | What will an Online Synchronous class look like?

The example below provides details for how an online synchronous class will appear on SIS.

Online Synchronous Course

Course name and instruction mode.
This course is **fully online** and will be delivered **synchronously**.

Class Details		Meeting Information	Enrollment Information	Class Availability	Textbook/Other Materials
ISTE 266 DesignForAccessibility Lecture - 12664-01					Status : Open
Units	Grading	Instruction Mode	Location	Campus	
3.00	Standard Letter Grade	Online - Synchronous	Rochester Institute of Tech	RIT Main	

Students enrolled in this **online synchronous** course attend class online and engage in some or all course activities at the specified days/times published in the class schedule.

Here, students will attend the course online from 9:05 am to 9:55 am, Monday, Wednesday and Friday throughout the fall semester.

ISTE 266 DesignForAccessibility						
Status	Units	Grading Basis	Grade	Academic Program	Requirement Designation	
Enrolled	3.00	Standard Letter Grade		UGRD Non-Degree		
Class	Start/End Dates		Days and Times		Room	
Lecture - 12664-01	08/19/2020 - 11/24/2020		Days: Monday Wednesday Friday Times: 9:05AM to 9:55AM		Online >	

Instruction Modes in SIS | What will an Online Asynchronous class look like?

The example below provides details for how an online asynchronous class will appear on SIS.

Online Asynchronous Course

Course name and instruction mode.

This course is **fully online** and will be delivered **asynchronously**.

No in-person or scheduled online class meetings are required.

Class Information					
Class Details		Meeting Information	Enrollment Information	Class Availability	Textbook/Other Materials
ISTE 560 FundamentalsOfInstructionalTec Lecture - 12677-01					Status : Open
Units	Grading	Instruction Mode	Location	Campus	
3.00	Standard Letter Grade	Online - Asynchronous	Rochester Institute of Tech	RIT Main	

This course is offered **fully online**.

Students complete all course activities **without designated class meeting times**.

ISTE 560 FundamentalsOfInstructionalTec					
Status	Units	Grading Basis	Grade	Academic Program	Requirement Designation
Enrolled	3.00	Standard Letter Grade		UGRD Non-Degree	
Class	Start/End Dates		Days and Times	Room	
Lecture - 12677-01	08/19/2020 - 11/24/2020		Days: To be Announced Times: To be Announced	Online	>

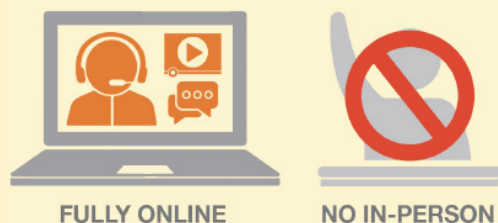
“Flex” Option

A class with a “Flex” option is an in-person or blended course in which the instructor has determined students can **achieve the learning outcomes via remote means**. Instructors will make the decision as to whether or not to offer a Flex option for their courses. If a course has a “Flex” option, students can choose to complete the course without physically attending class, as outlined below. It does not mean that the “Flex” design will be equivalent to a fully online course experience.

This option is **only available on courses with the flex designation**.

Students need to communicate with their instructor and should review their responsibilities associated with completing a course designated “Flex,” including that they have the necessary technology to do so.

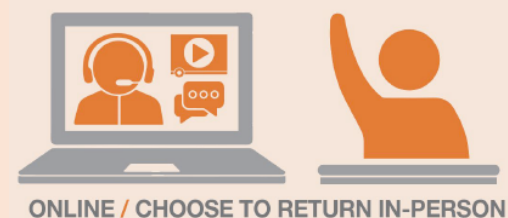
Online Flex Option



Students select this option if they are not able to attend any assigned in-person sessions of the course and will complete all course requirements **fully online**.

The student will communicate this choice to the faculty member and the expectations for course completion will be outlined.

Full Flex Option



Students select this option if they are not able to attend assigned in-person sessions of the course at any point in the semester, but **may choose to return to their in-person session if their personal situation changes**. While absent from the in-person sessions, the student will complete all course requirements online. If a student needs to transition to Online Flex, the student will communicate this to the instructor so that expectations for course completion can be outlined.

Expectations for faculty offering the “Flex” option:

- Faculty will make all learning activities, including exams, available in some form online
- Faculty members should include in their syllabus:
 - how students choosing this option should access course material.
 - the minimum technology requirements that students need to fully participate.
 - describes how a student will meet the course requirements through assignment submission, participation, etc. if they select the “Flex” option.

Expectations for students choosing the “Flex” option:

- Students will notify the instructor that they wish to pursue the “Flex” option, and if applicable which “Flex” option (Online or Full).
- Students must be willing and able to abide by the instructor’s requirements for remote participation, and agree that their technology access will not limit their satisfying course expectations. The instructor requirements will be detailed in the course syllabus.
- Students will engage with all course materials and activities as outlined in the Flex expectations by their faculty member.
- Students will assume the added responsibility associated with remote participation in the course (e.g. internet access).

Instruction Modes in SIS | What will the “Flex” option look like?

The example below provides details for how the “Flex” option will appear on SIS.

“Flex” Option

Course name → **COMM 101 Human Communication**
Lecture - 10098-03 **Status : Open**

Class Information
An introduction to the theoretical and conceptual underpinnings of oral, visual, and written communication. Introduces basic communication models, the role of language in communication, symbols and symbol making, issues of audience analysis, and the development of different modes of discourse. Also explores the history of communication and introduces students to basic principles and research in communication studies.

Units 3.00
Grading Graded
Class Components Lecture
Course Career Undergraduate

No Enrollment Requirements

No Class Notes

Class Attributes 1 Access Services - Access Services: Interpreter
Class Attributes 2 Flexible Online/In-Person - Online/In-Person flexibility for learning

This course is offered with a **faculty-designated “Flex” option**.
A flex-option class is a blended or in-person course in which the faculty member has determined that students can achieve the learning outcomes via remote means.