

(UN)PLUGGED

Nikki Nguyen

Table of Contents

Title.....p.1

Concept Statement.....p.3

Design Proposal Statement.....p.4

Site Plans.....p. 5-6

Zone Diagram.....p.7

Floor Plan.....p.8

Exploded Axonometrics.....p.9 & 13

Axonometric View.....p.10

User Experience.....p.11

Reflected Ceiling Plan.....p.12

Hydro Bar.....p.14

Renderings.....p.15-18

Bio Brief.....p.19

Credit.....p.20

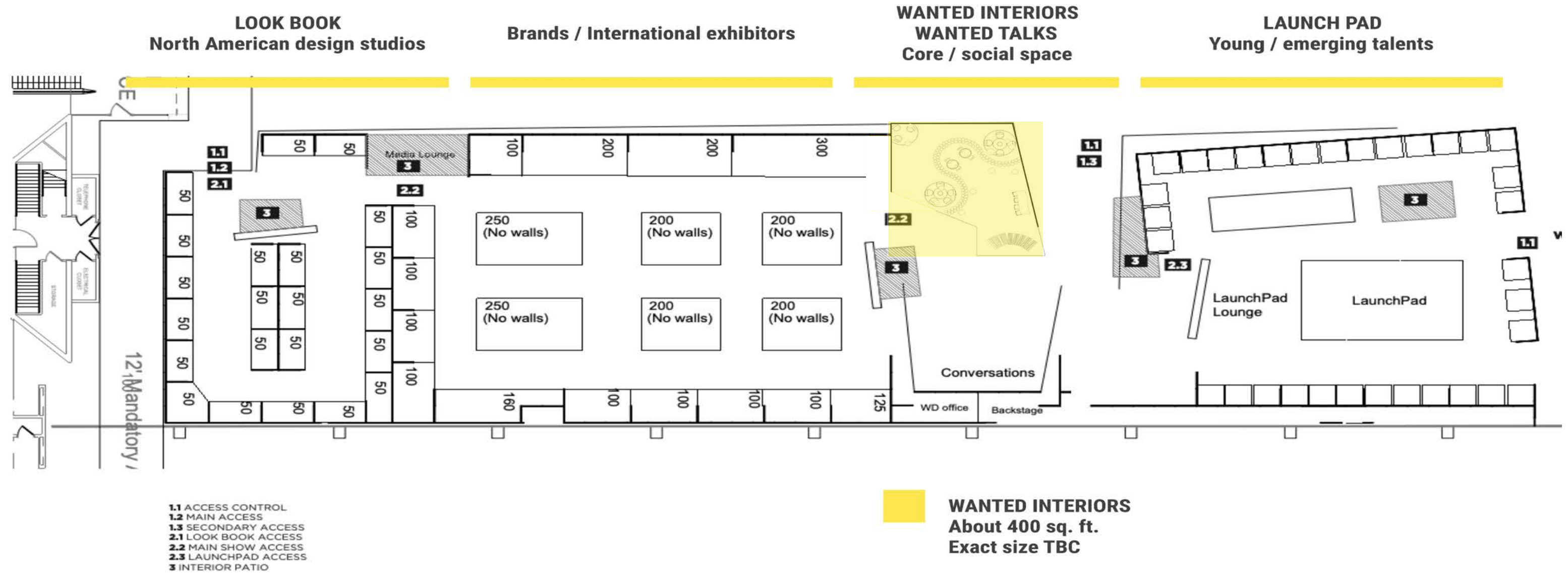
Concept Statement

(Un)Plugged is a space that focuses on creating different social environments through visual and auditory changes. By enclosing the Sociofugal (unplugged) spaces and opening the sociopetal (plugged) spaces using different cardboard construction methods this will create both interactive and secluded areas. The secluded areas will be more enclosed with less natural lighting and more intimate lighting. The secluded areas will also serve as a charging station, so people will put their phones down and be in a relaxed atmosphere. Meanwhile the more social areas will serve as a space where visitors can interact with each other and promote an energized atmosphere.

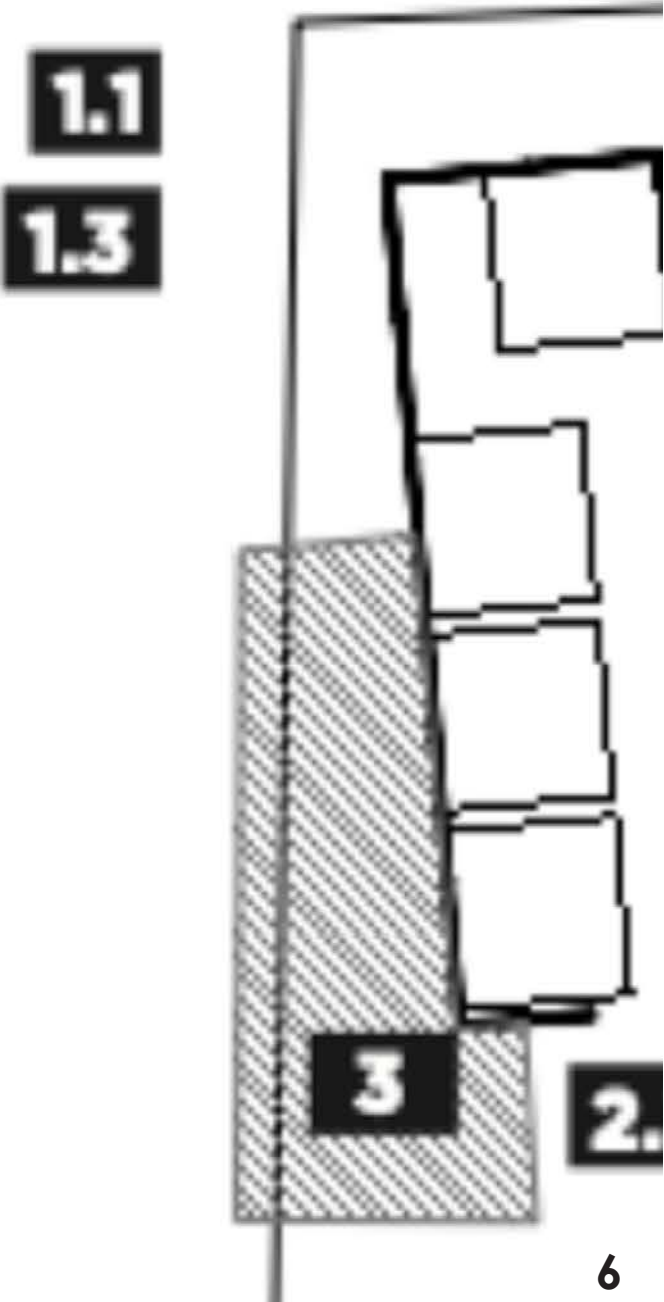
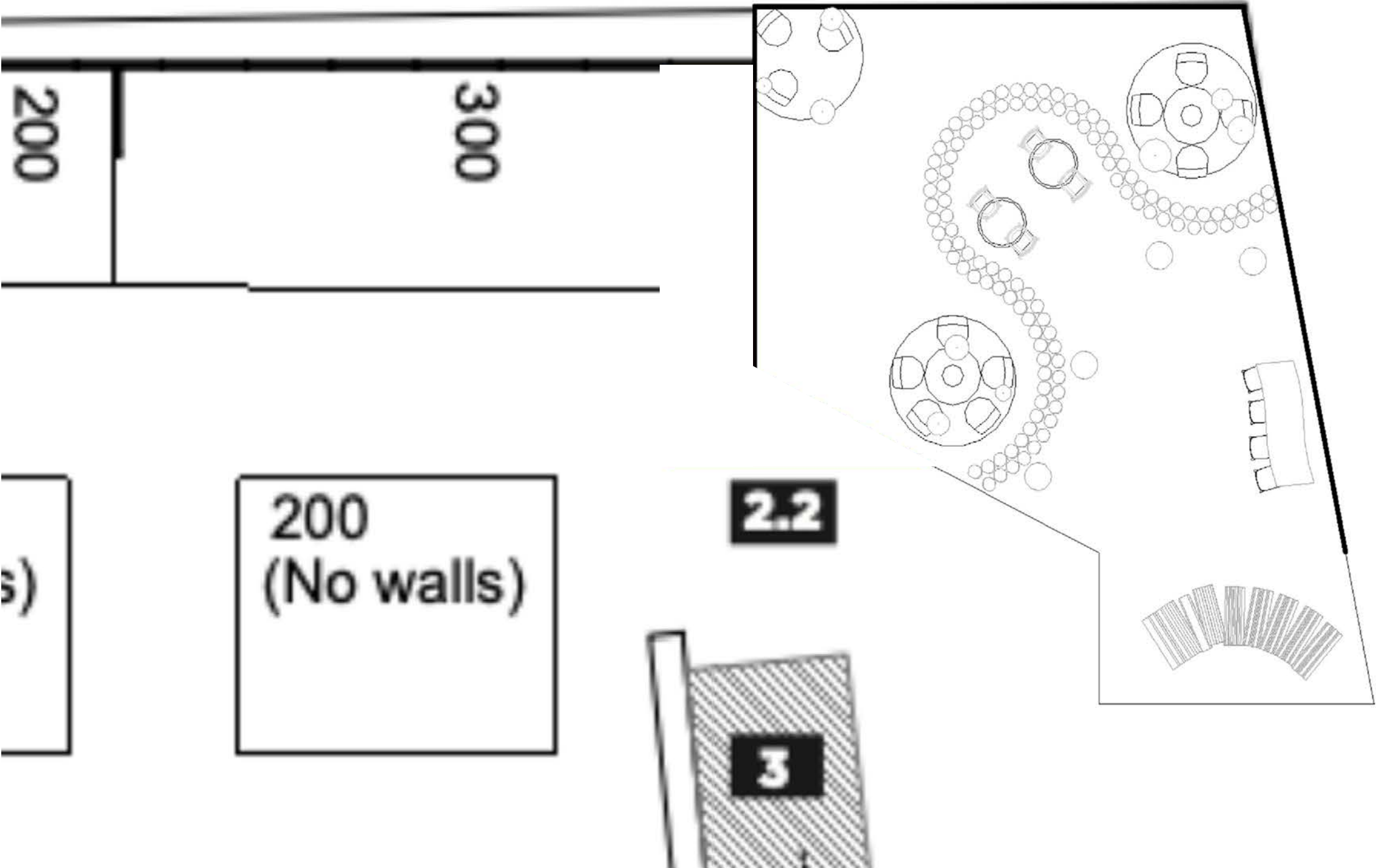
Design Proposal Statement

The exhibition utilizes cardboard tubes and structural cardboard throughout the space. The cardboard will be stacked vertically and horizontally to create intimate moments. The carpet from Shaw Contracts will be placed traditionally (on the floor) and untraditionally placed on the cardboard tubes. The Ressource paints will be on the cardboard tabletops and on the hydro bar. For the visitor experience, there is an Instagram wall for people to take pictures and for people to take home takeaways. The Instagram wall is a way to entice people to walk into the space and to have memories of the space.

Overall Site Plan

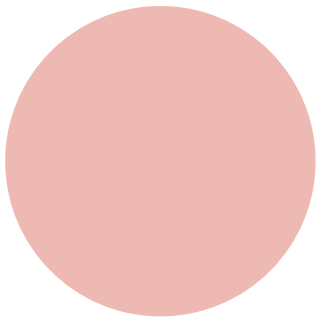


Zoom In Site Plan

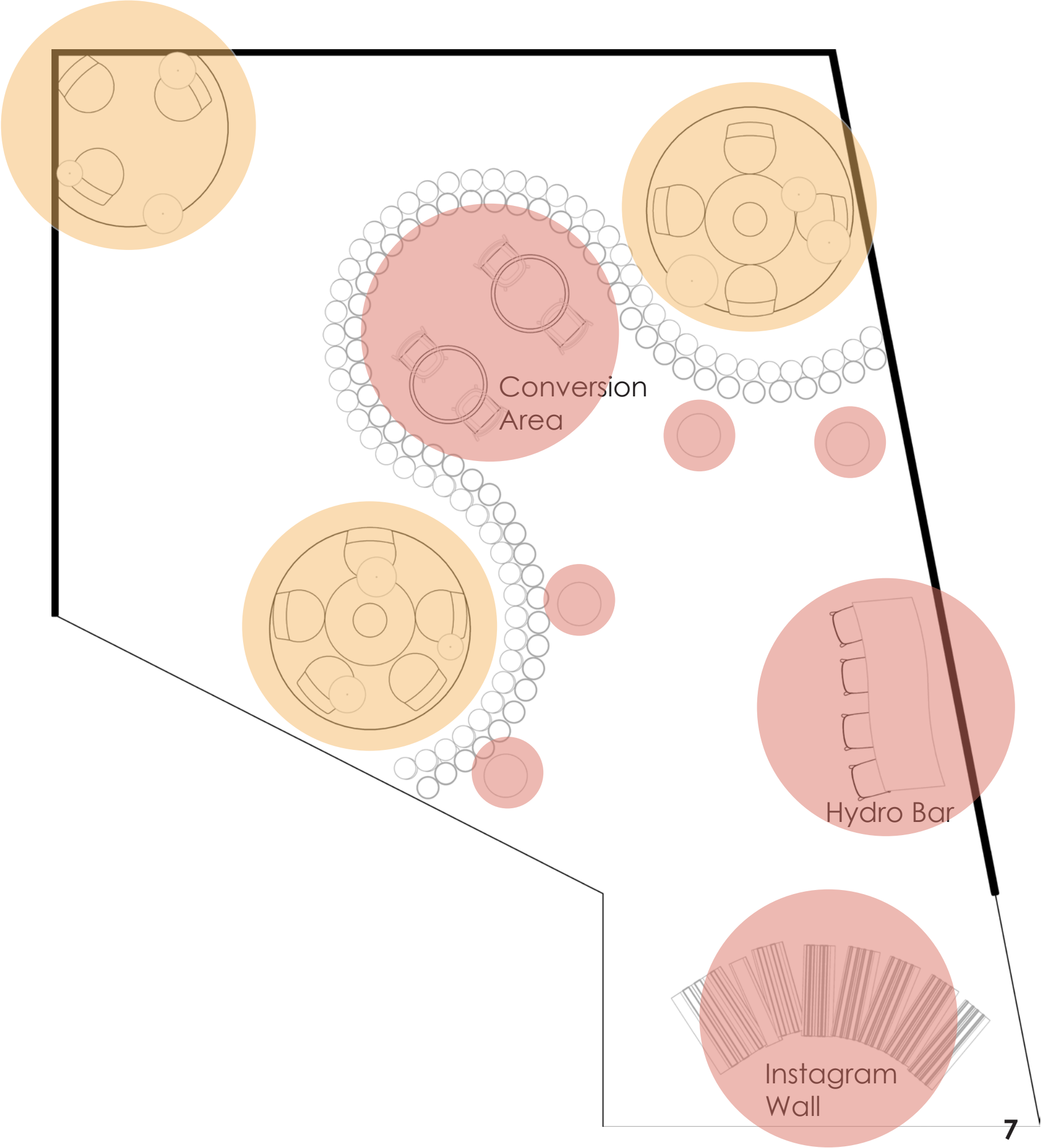
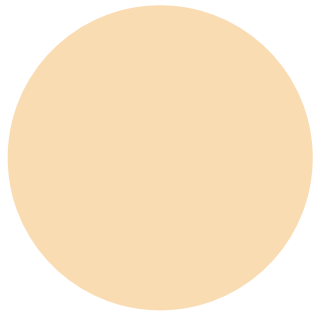


Zone diagram

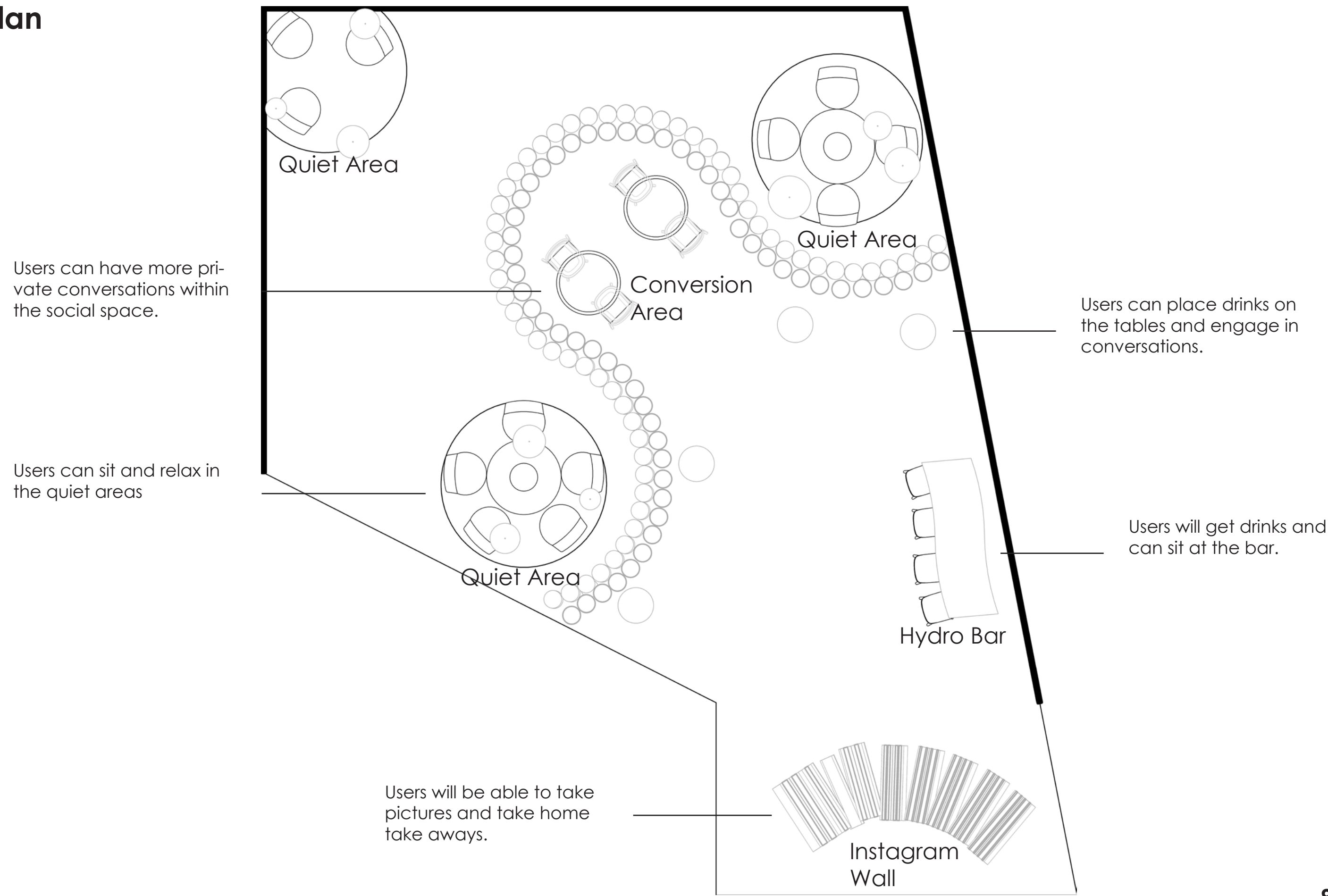
Active zones
Extrovert activies



Passive Zones
Introvert activities



Floor Plan

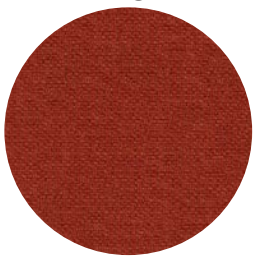


Exploded Axonometrics

Coalesse- Topo Lounge



Knoll- Swing, Henna



Knoll- Demure, Sapphire



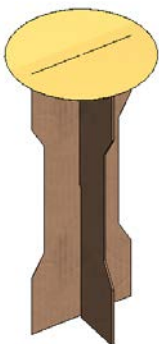
Coalesse- Cira Table, Clear Maple



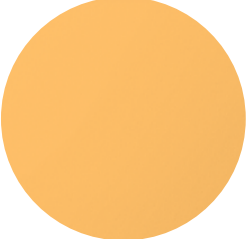
Emeco- Reclaimed Chair, Natural



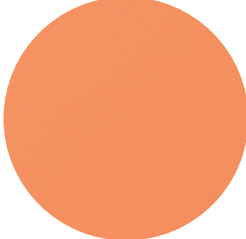
Cardboard- Cocktail Table



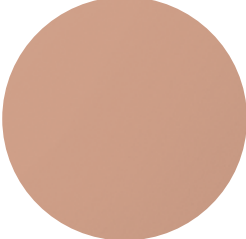
Ressource
Melilla



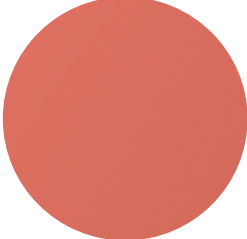
Palma



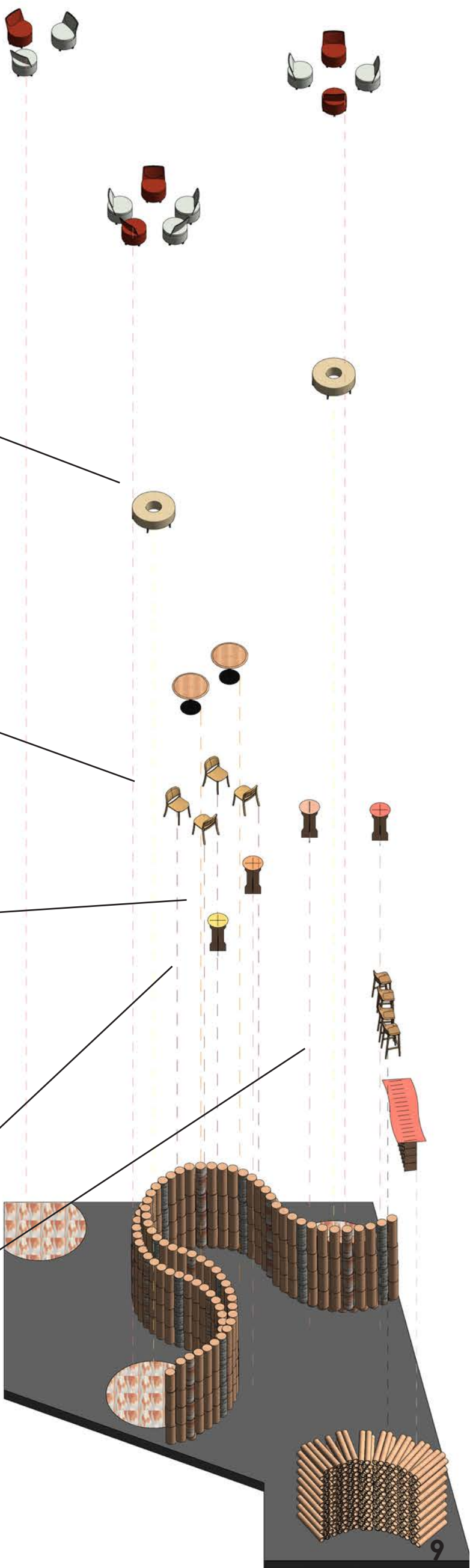
Ferrare



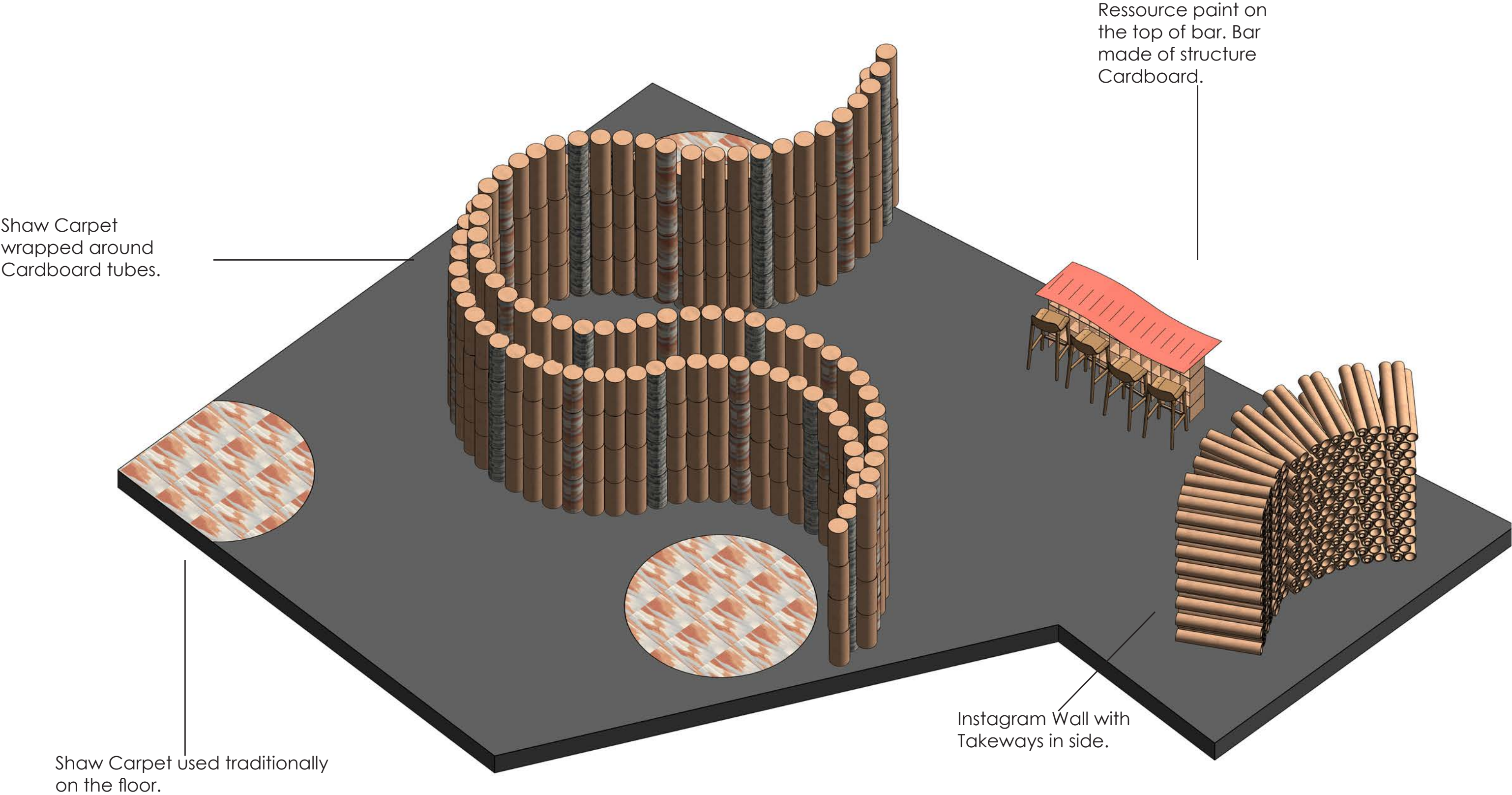
Jaipur



Emeco- Broom Barstool, Natural



Axonometric View



User Experience- Takeaways and Instagram Wall

Back of takeaways



Location	Interior Design	Partners	Contact
Javits Center Terminal Stores 34th street and 12th Ave Manhattan, NY 10001 May 17-20	RIT Interior Design Students	Emeco Ressource David Trubridge Shaw Contract Coalesse (Soft seating) Steel case (Soft seating)	Mary Golden: megfaa@rit.edu

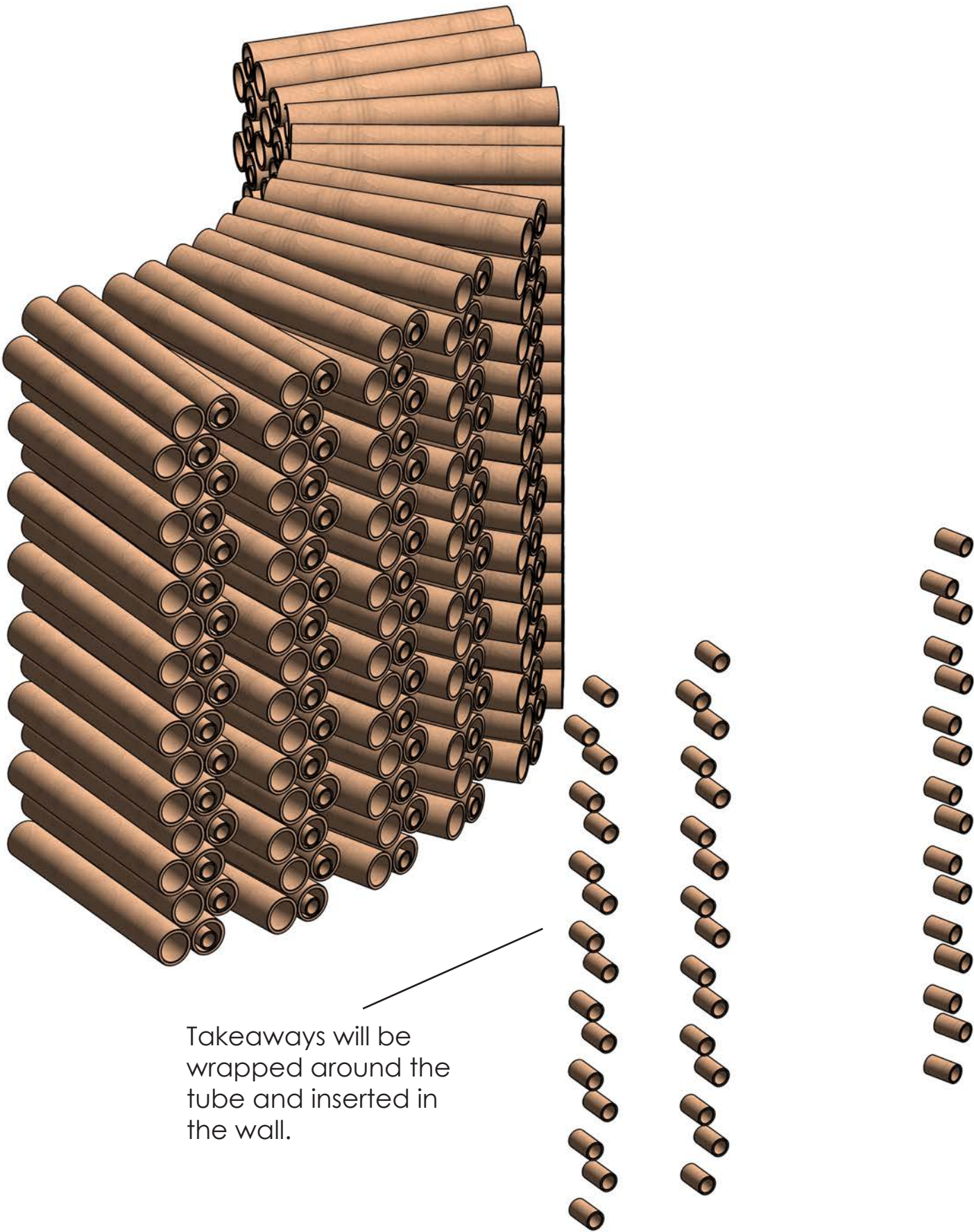
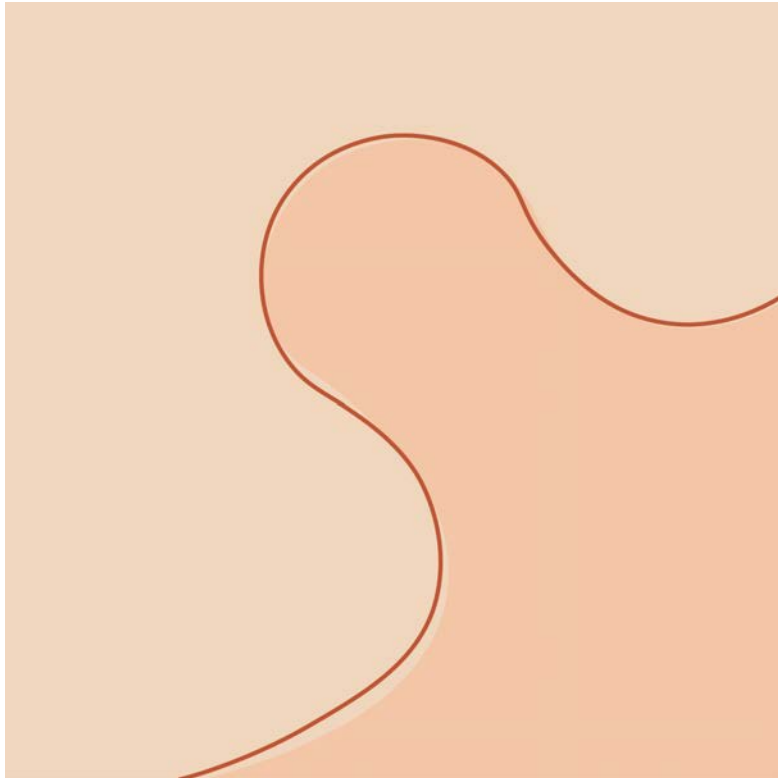
Concept

(Un)Plugged is a space that focuses on creating different social environments through visual and auditory changes. By enclosing the sociofugal (unplugged) spaces and opening the sociopetal (plugged) spaces using different cardboard construction methods this will create both interactive and secluded areas. The secluded areas would have less illumination and create a more compact area that allows for a relaxed atmosphere with the absence of technology. Meanwhile the more social areas will serve as a space where visitors can interact with each other and promotes an energized atmosphere.



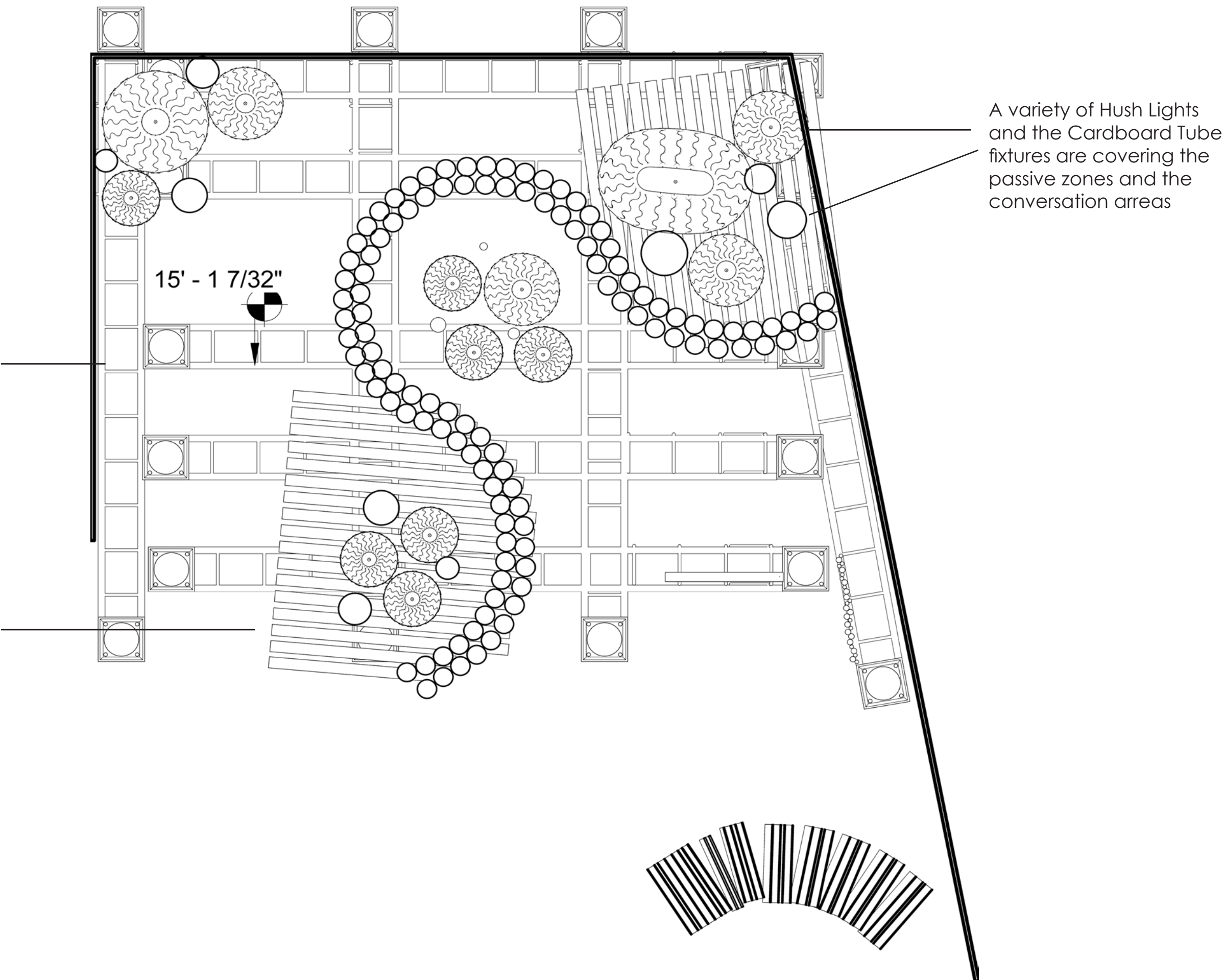
Front of Takeaway

Colors used are similar to the Ressource paints. The shape is similar to the tube structure. The brown color represent the tubes

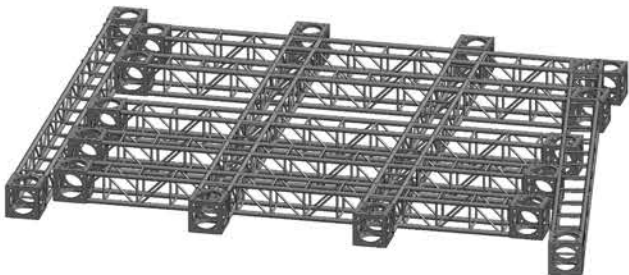


Takeaways will be wrapped around the tube and inserted in the wall.

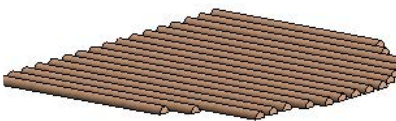
Reflected Ceiling Plan



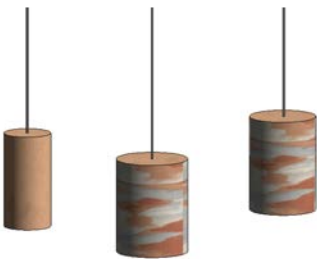
Exploded Axonometrics



Cardboard Tube Fixture



Cardboard Tube fixtures



Cardboard



Shaw Contracts- Desert Lights



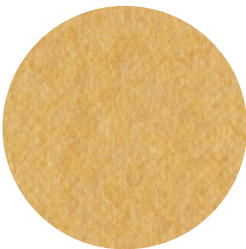
Hush Lights



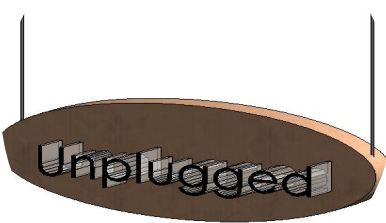
Opera



Serando



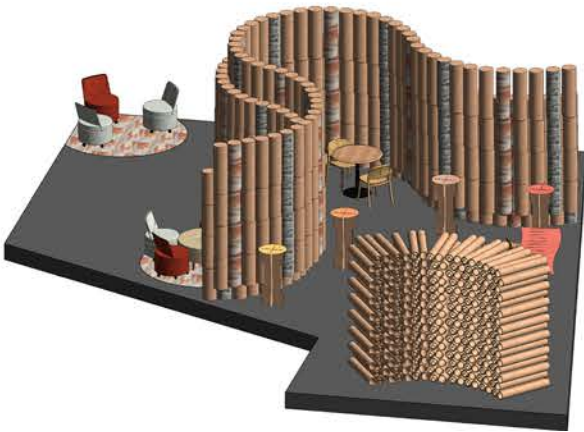
Cardboard Signage



Cardboard

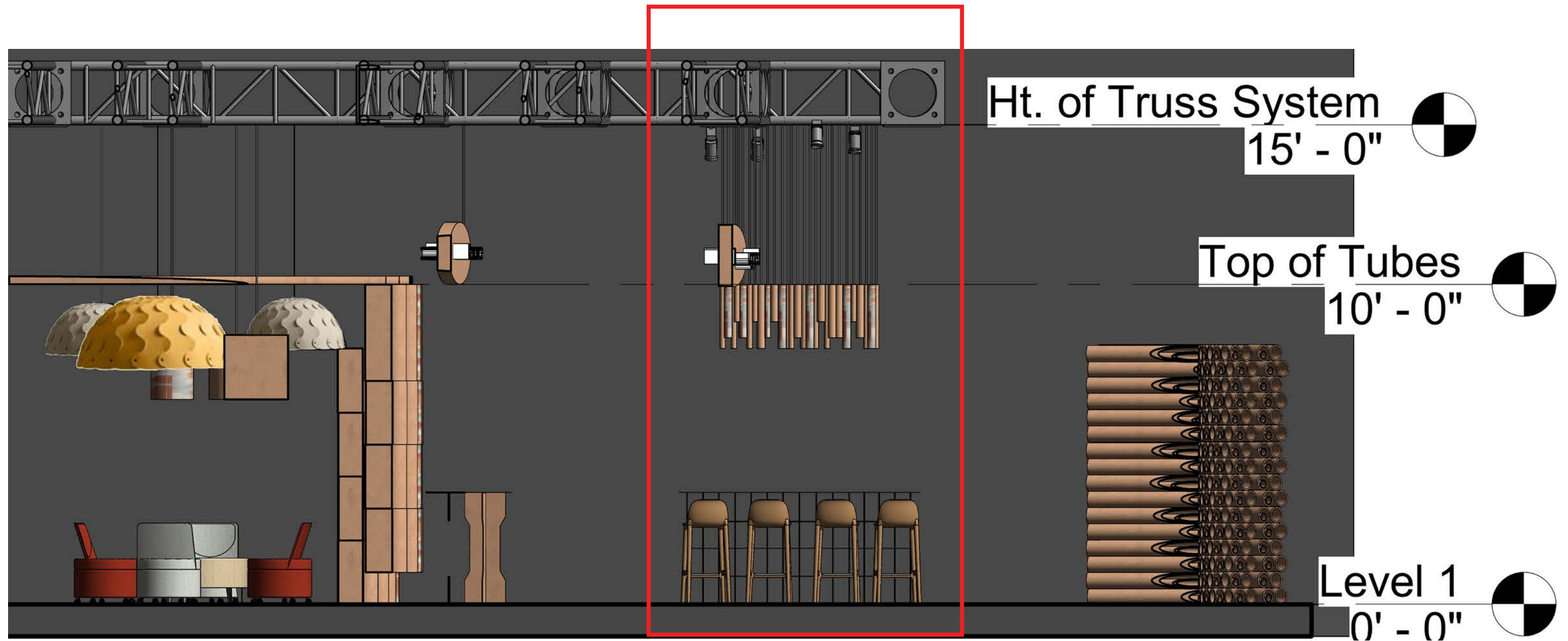


LED Light Strips



Hyrdo Bar

The bar is more simplistic because the overall space is full of cardboard tubes. The Bar is made of structural cardboard that are slotted together. The bar top includes Ressource paint that will be sealed to avoid stains and chipping. Above the bar are cardboard tube fixtures that are covered with Shaw Carpet.





Conversation Area





Unplugged Area



Bio Brief



Rochester, NY

I am excited to meet new designers at Wanted Design and have an opportunity to see all the different installations. I think that it is important for thousands to experience and see the installation because different exhibitions will show that simple materials could be used in unconventional ways to create beautiful spaces. Materials do not have to be used in traditional ways; materials can be used on the walls, tabletops and even as lighting fixtures. Wanted Design is also a great way for networking to meet new people that you could potentially work for.

Credit Page

The ideas for the final installation came from Project 2. For project 2, small group members (Micky Zhang, Thomas Ritcher, and Becca Goldberg and I) came up with the idea of creating a structure using cardboard materials to create the overall structure. I started off with the idea from Project 2 but altered it by using cardboard tubes to create those private spaces. I also did not fully cover the top of the private spaces like the original design, but I used cardboard tubes instead to allow a little light to shine through.

The idea of the footprint came from other members of the Interior Design Class. I started off with the same footprint but redesigned the entire layout of the exhibition. I kept the cardboard tubes throughout the entire space but rearranged them different. The entire space solely uses cardboard tubes and cardboard sheets throughout the entire space.