

# De-Stress Aroma Massager

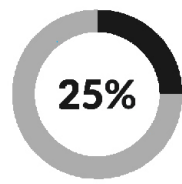
## Initial Problem

Mental illness is a major issue facing humanity. It affects people's thinking, mood, and behaviors, and causes severe impact on people's physical health problems. The goal of this project is to design a product or piece of equipment that can assist with tackling people's mental health problems.

## Statistics



Among  
Suicide Cases



World Statistic



Increase Rate  
2005-2015

## Consequences



Body Ache



Social Isolation



Health Issues



Suicide

## Current Treatments



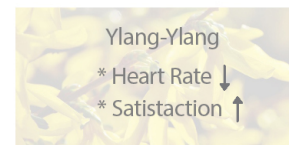
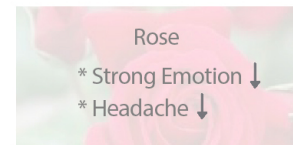
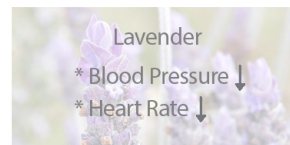
Medication Psychotherapy Group Therapy Massage Music Therapy Aromatherapy

## Problem Statement

Design a convenient product that helps people release their strong emotions by physical treatment.

## Physical Treatment for Relaxing

Aromatherapy



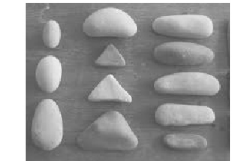
Acupressure Treatment

	Hall of Impression	Heavenly Gate	Shoulder Well	Union Valley	Inner Frontier
Stress	✓	✓	✓	✓	
Anxiety	✓	✓			✓
Insomnia		✓			
Headache			✓		
Body Pain				✓	✓
Nausea					✓

## Design Inspiration

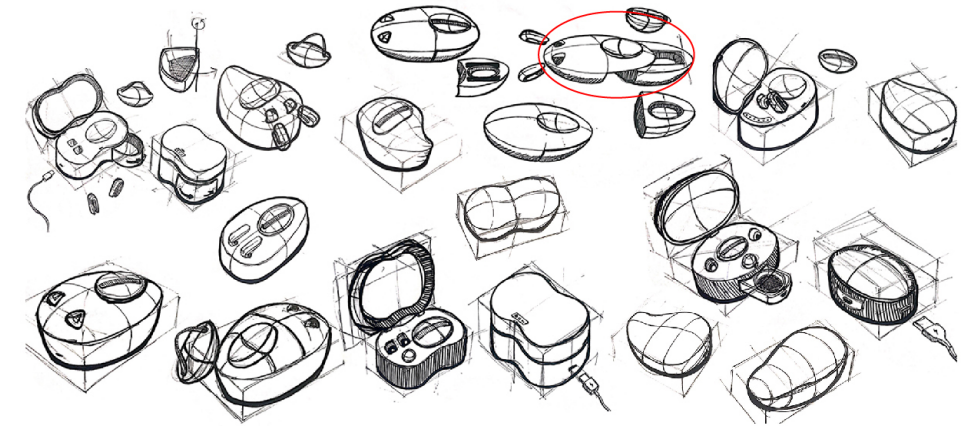


- \* Portability
- \* Electronic Device
- \* Chargeable

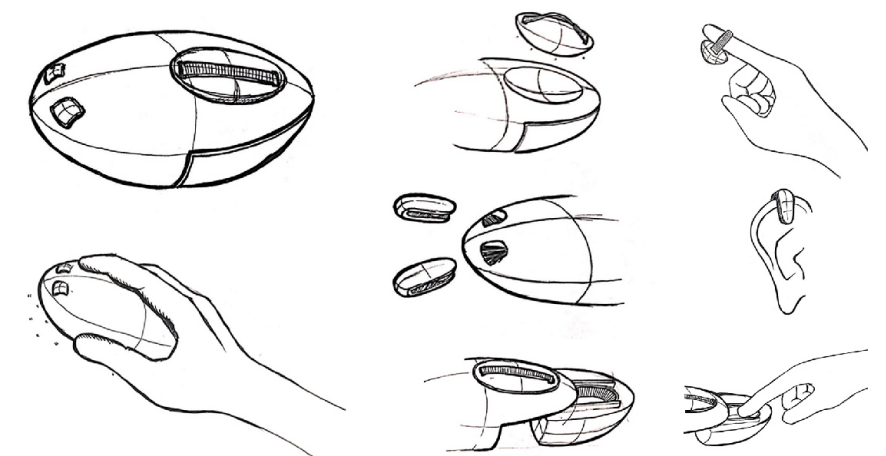


- \* Organic Shape
- \* Natural

## Ideation



## Idea Visualization



# De-Stress

## Aroma Massager

The design is inspired by the natural shapes of stone. The main body is an electronic portable device, with a balm container below and several massage tools on it.

The physical treatments concept is combining Eastern medical therapy, acupuncture, and Western treatment, aromatherapy. The users can apply vibrating tools and fragrance balm to specific spots on their body to ease their stress.



Ear Clips



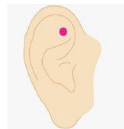
Finger Massage Tool



Balm Container



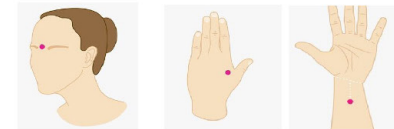
Ear clips massage tools is mainly used for Heavenly Gate Point on our ears. It will be triggered by the width of its opened angle.



Stress, Anxiety, Insomnia



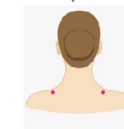
Finger massage tool is used to massage the acupoints on our face and hands. It will be triggered by human body temperature.



Stress, Anxiety, Insomnia, Headache, Body Pain, nausea



Massage tool on the device itself is used to massage larger part on our body, especially the points on the shoulder. It will be triggered by body temperature as well.



Stress, Headache